

## **Disclaimer**

© 2012 Delta Power Equipment Corporation. All Rights Reserved

This Old Workshop, in cooperation with Delta Power Equipment Corporation (“Delta”), is delighted to provide this digital reissuing of the historic *Deltagrams* produced from the 1930s through the 1970s. Each issue is presented by permission of Delta, and distributed and archived by This Old Workshop. The *Delta*gram publications are copyrighted materials. Delta is the sole owner of these publications. Reproduction of any articles, images or instructions contained in them requires the express written permission of Delta or its legal representative.

These *Delta*gram publications are presented solely as historic archival materials and are not intended to be used as instructional information. Techniques and practices described or depicted in these publications may no longer be consistent with accepted practice, and, in some cases, may be considered hazardous with a potential to result in serious personal injury or property damage. For the safety of you and those around you, we encourage you to comply with all warnings and instructions provided in connection with your products, including but not limited to any warning labels and operator manuals.

By using or possessing these *Delta*gram publications, you agree to hold Delta and This Old Workshop harmless against any liability based upon their content. Any advertisements or offers contained within these issues are discontinued and will not be honored.



# The Deltagram

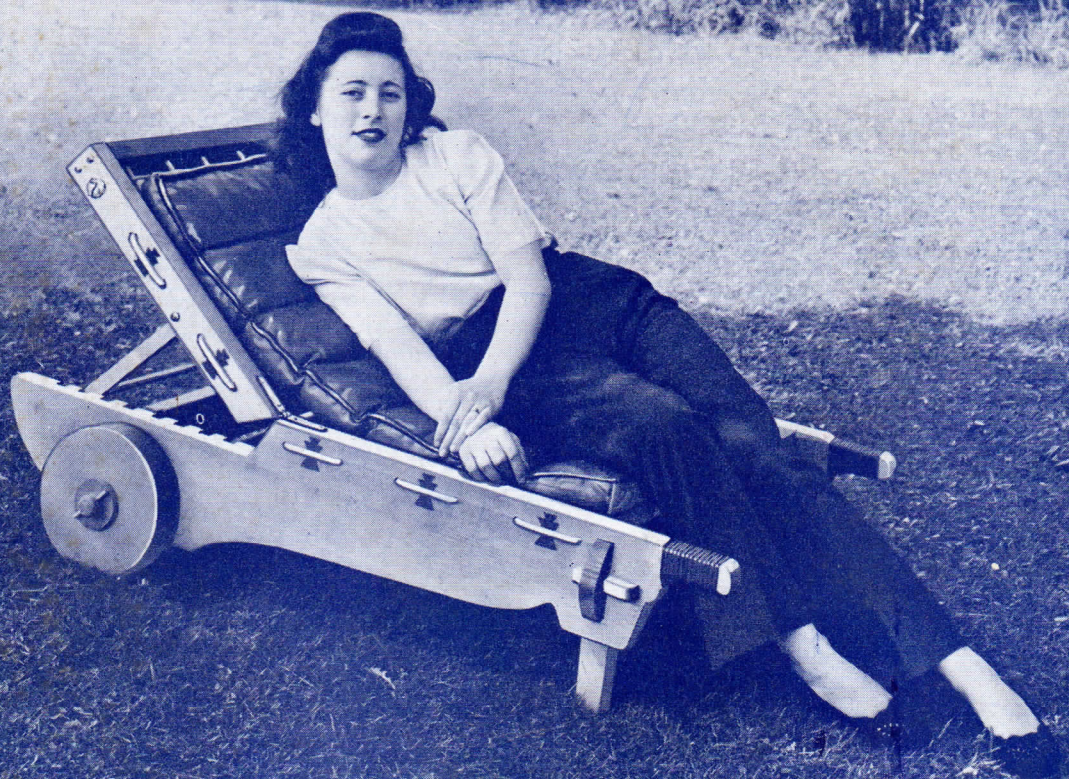
TRADE MARK REG. U. S. PAT. OFF.

VOLUME EIGHTEEN

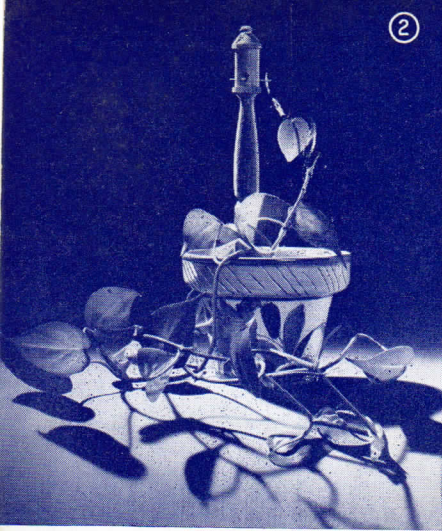
*Issue No. 6, 1948, '49*

FIFTEEN CENTS

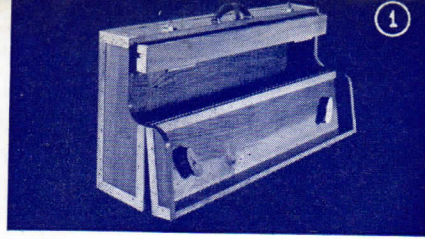
- ★ GARDEN LOUNGE
- ★ KNICK KNACK TABLE LAMP
- ★ RING WATER GAME
- ★ INDIVIDUAL CROQUET SET
- ★ KNITTING BOWL STAND
- ★ CAMERA TRIPOD
- ★ UTILITY TABLE







②



①

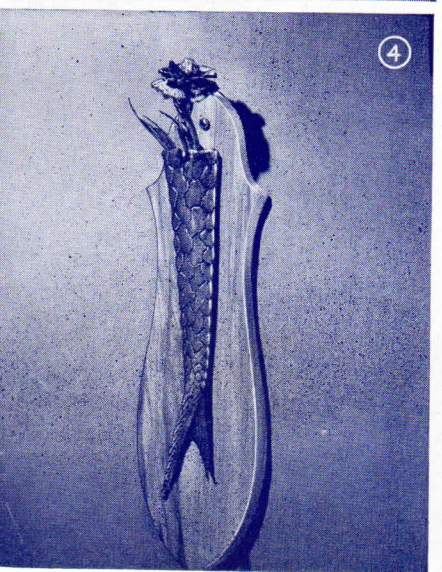
# With **DELTA CRAFTERS...**

The top photograph of the carpenter's tool box is one made from Deltaqram plans which appeared in Issue No. 1, volume 16. For added strength, Mr. Conery of Storm Lake, Iowa, reinforced the corners with brass angle irons.

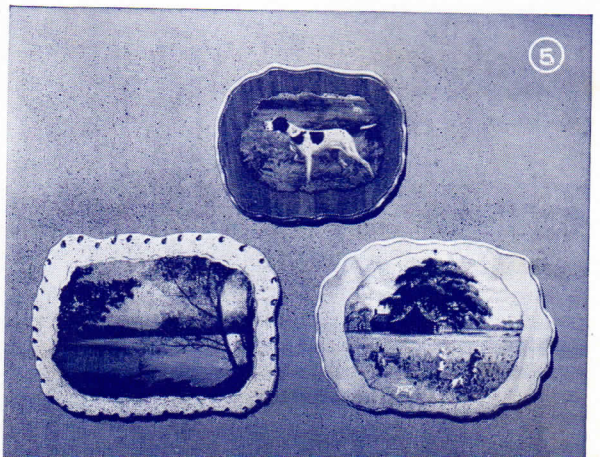
Projects in photos numbers 2, 3, 4, and 5 are from the workshop of Mr. Schroeder of Milwaukee, Wisconsin. The ornamented flower stick in photo No. 2 is a lathe turning painted in bright colors. This is only one of the many designs created by Mr. Schroeder. Believe it or not, the odd piece flower holder in photo No. 3 is an original scythe stone holder used in Switzerland. Another unusual flower holder is the one made from a sturgeon's tail (photo No. 4). Colored pictures glued onto shaped pieces of plywood made up the plaques in photo No. 5.



③



④



⑤



TRADE MARK REG. U. S. PAT. OFF.

• PUBLISHED BY THE DELTA MANUFACTURING COMPANY, MILWAUKEE, WISC. SOLD ONLY BY SUBSCRIPTION - 75¢ THE YEAR.

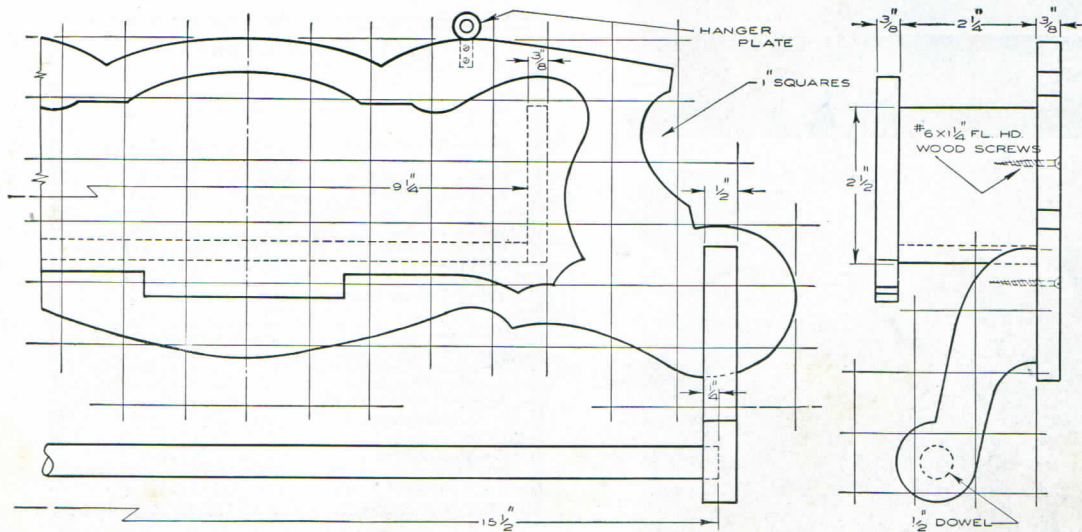
★ A. M. WARKASKE - MANAGING EDITOR

Issue No. 6, 1948, '49

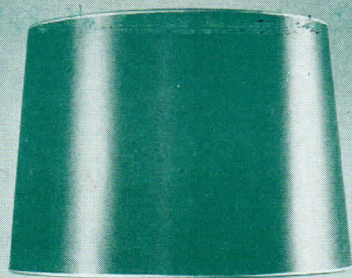
FIFTEEN CENTS



☆ This project is designed very much like the old fashioned comb holder. The entire rack is made of 3/8-inch plywood except for the towel rod brackets which were cut from 1/2-inch panel. Draw the design onto the plywood by using the square method. A scroll or band saw and a drill press are the only machines required to make up the project. The one illustrated was finished with one coat of enamel under-coating and a good grade of white enamel. To add a little color, decals were used.







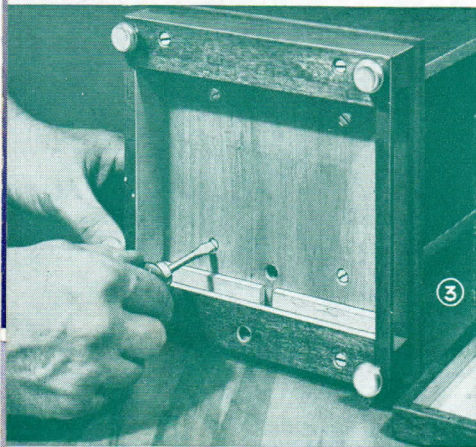
②



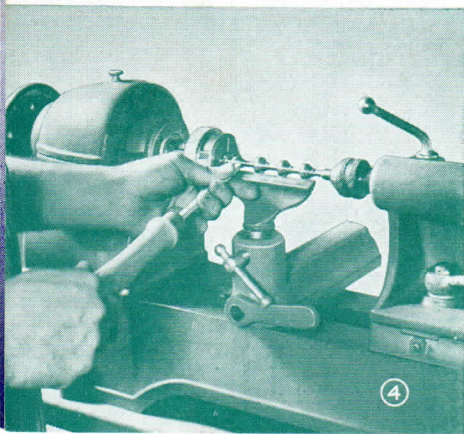
①

## Knick Knack TABLE LAMP

☆ Somewhat different from the ordinary run of lamps, this one will blend itself very nicely with almost any type of furniture. The brass rings, turned brass feet, and door knob add contrast to the lamp. Make of either walnut or mahogany. All dimensions are indicated in the drawing on the opposite page. Sizes shown in the bill of material correspond with those in the drawing. For a professional finish use a dark filler and follow with two or three coats of thin shellac. Thin plastic, approximately  $\frac{1}{8}$ -inch thick can be substituted for the glass shelves. To preserve the bright finish on the brass parts apply clear lacquer with a fine camels hair brush.



③

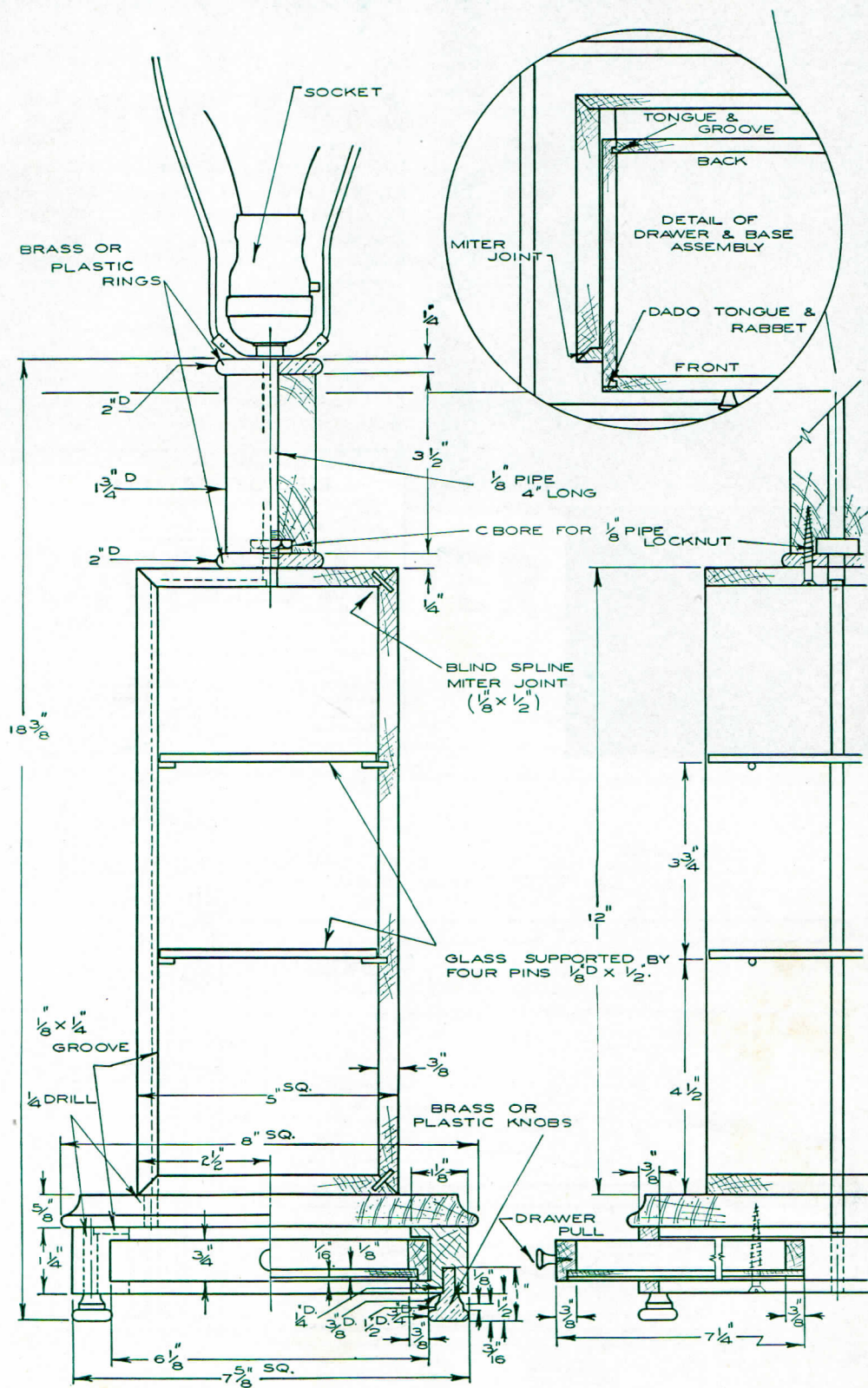


④

### BILL OF MATERIAL

No. Req.	Name	Size
Base:		
2	—Front and Back .....	$3\frac{3}{4} \times 1\frac{1}{4} \times 7\frac{5}{8}$
2	—Side .....	$1\frac{1}{8} \times 1\frac{1}{4} \times 7\frac{5}{8}$
1	—Top .....	$5\frac{3}{4} \times 8 \times 8$
4	—Feet (brass) .....	$\frac{3}{4} \times \frac{3}{4} \times 1$
Drawer:		
1	—Drawer Front .....	$3\frac{3}{4} \times 3\frac{3}{4} \times 6\frac{1}{8}$
1	—Drawer Back .....	$3\frac{3}{4} \times 9\frac{1}{2} \times 6\frac{1}{8}$
2	—Drawer Side .....	$3\frac{3}{4} \times 3\frac{3}{4} \times 7\frac{1}{8}$
1	—Drawer Bottom .....	$1\frac{1}{2} \times 7 \times 5\frac{3}{8}$
1	— $\frac{1}{2}$ Drawer Pull (brass) .....	
Body:		
2	—Side .....	$3\frac{3}{4} \times 5 \times 12$
2	—Bottom and Top .....	$3\frac{3}{4} \times 5 \times 5$
2	—Shelve (single strength) .....	$\frac{1}{4} \times 4\frac{1}{4} \times 4\frac{1}{4}$
8	—Pin (brass) .....	$\frac{1}{8}$ Diam. x $\frac{1}{2}$
4	—Blind Spline Stock .....	$\frac{3}{8} \times \frac{1}{2} \times 4$
Fixture Support:		
1	—Column .....	$1\frac{3}{4} \times 1\frac{3}{4} \times 3\frac{1}{2}$
2	—Rings (brass) .....	$\frac{1}{4} \times 2 \times 2$
1	—Lamp Jacket; Shade; Shade Fixture; Pipe and Locknut	





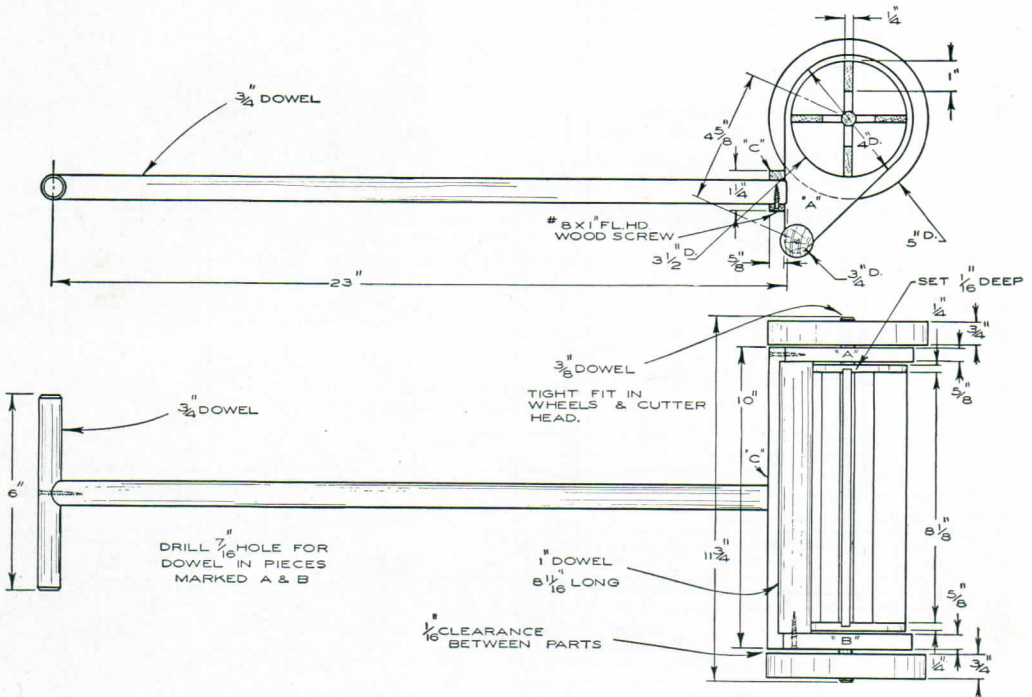


# TOY LAWN MOWER

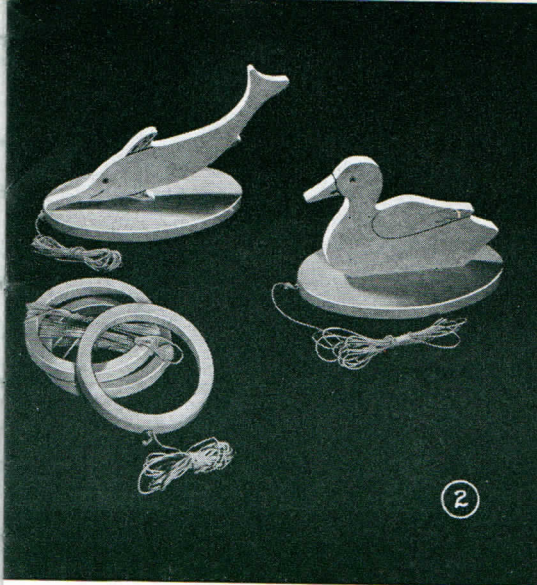
☆ A timely toy for the youngsters will keep any little boy or girl occupied by the hour with this midget lawn mower. Made of odds and ends found in any home workshop you can build this toy in a very short time. The wood axle should fit tight onto the cutterhead ends and wheels. If no undersize drill is available use a regular  $\frac{3}{8}$ -inch drill and fasten tight to the cutterhead ends and wheels by nailing these together with  $\frac{3}{4}$ -inch finishing brads. Paint the cutterhead black or gray, the handle frame green, and the handle and wheels red.

## BILL OF MATERIAL

No. Req.	Name	Size
<b>Handle Frame:</b>		
2—	Piece (A & B) .....	$\frac{5}{8}$ " x 4 x 7
1—	Frame Stretcher (C) ....	$\frac{5}{8}$ " x $1\frac{1}{4}$ x 10
1—	Arm .....	$\frac{3}{4}$ " Diam. x 23
1—	Handle .....	$\frac{3}{4}$ " Diam. x 6
1—	Roller .....	1" Diam. x 8-11/16
7—	No. 8 x $1\frac{1}{2}$ " Flt. Hd. Wd. Screws	
1—	No. 8 x 1" Flt. Hd. Wd. Screws	
<b>Cutter Head:</b>		
2—	Ends .....	$3\frac{1}{2}$ " Diam. x $\frac{1}{4}$ "
4—	Blades .....	$\frac{1}{4}$ " x $1\frac{1}{2}$ x $8\frac{1}{4}$ "
1—	Axle .....	$\frac{3}{8}$ " Diam. x $11\frac{3}{4}$ "
2—	Wheel .....	5" Diam. x $\frac{3}{4}$ "

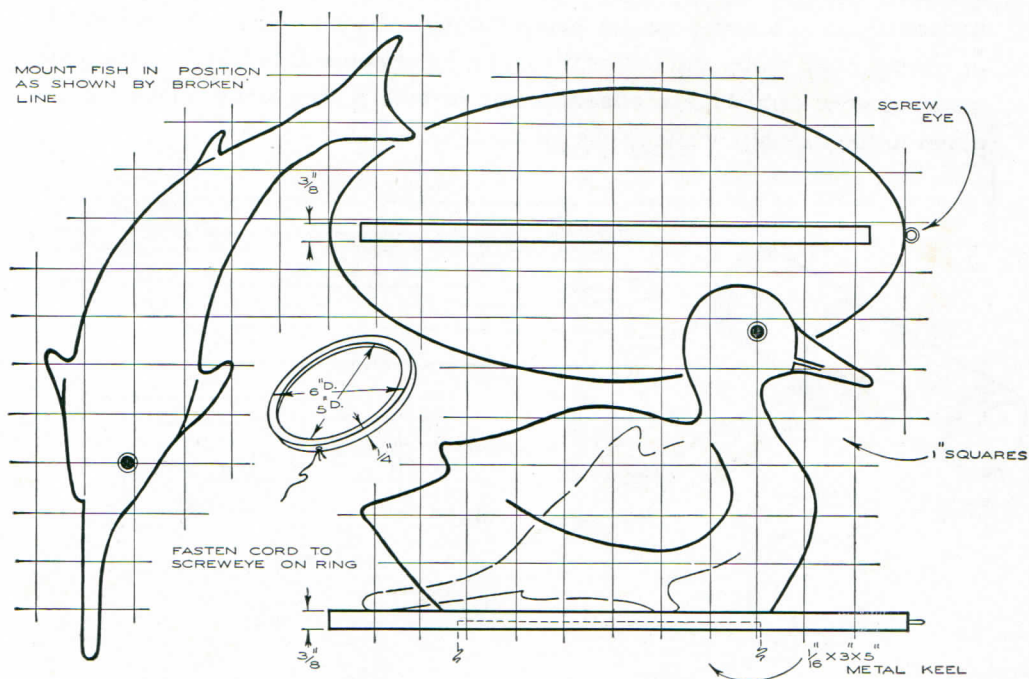




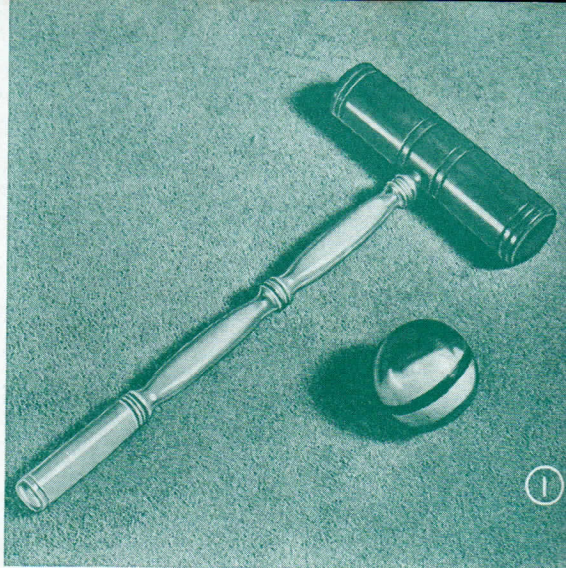


# RING WATER GAME

☆ Amusement for both old and young can be had with these simple cut-outs mounted on a board to keep them afloat, while trying to ring the duck or the fish. With a little practice you will be able to ring the targets at great distances. Make sure you use exterior or waterproof plywood for both the targets and the rings. Screw fasten the figures to the bases. For better buoyancy add sheet metal rudders to the bases as indicated in the drawing below. Paint with bright colored enamels.

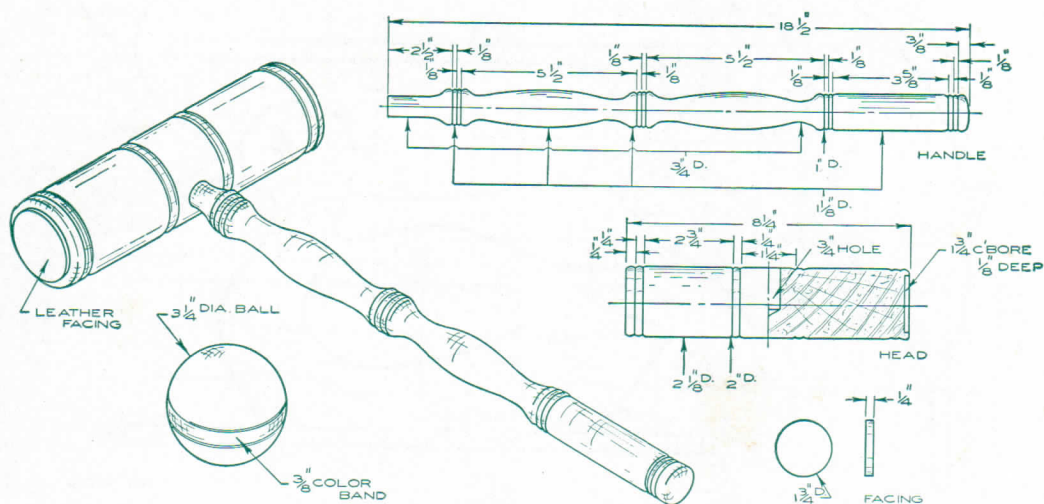




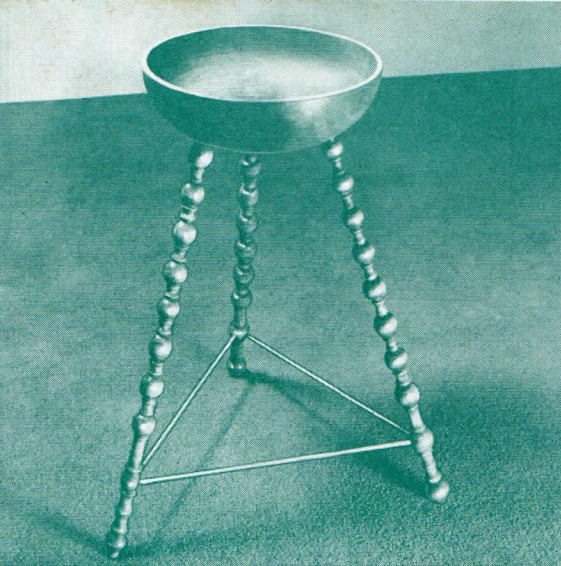


## Individual CROQUET SET

☆ Just as the professional ball player or billiard player insists on his own bat or cue, so do some croquet players like to have their own mallet and ball for the real close games. The one shown on this page was copied after a set used several years ago. This mallet is a little shorter than the standard which we understand is a favorite among many croquet players. Made of hard maple or cherry, both mallet and ball will stand a lot of abuse if finished with a good grade of spar varnish. For added design to both pieces fancy inlays can be glued to the turnings while in the lathe.



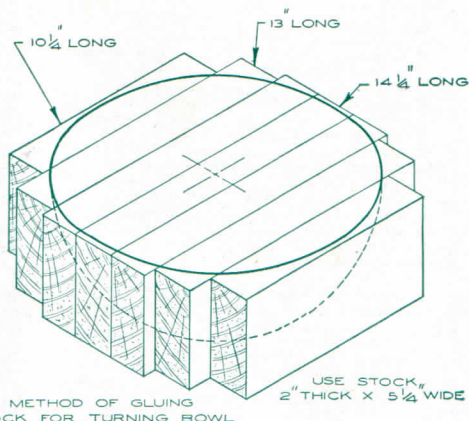
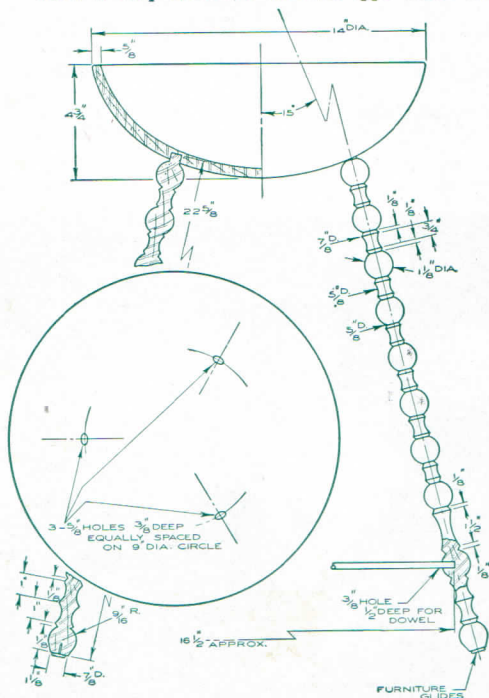




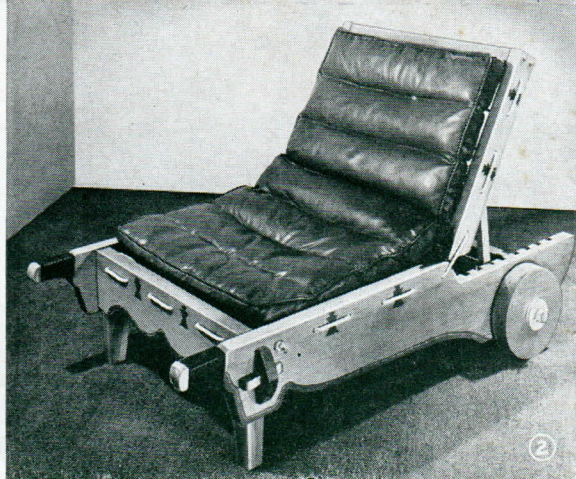
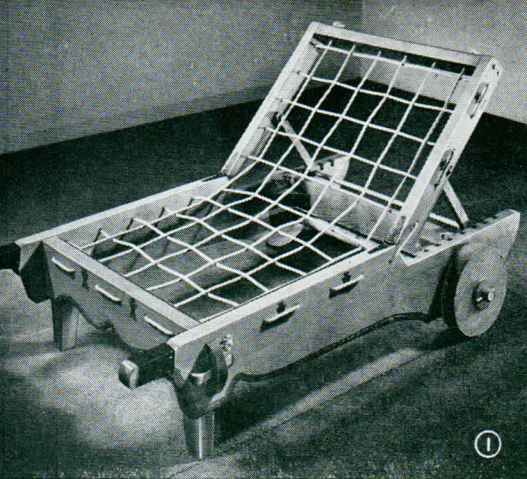
# Colonial KNITTING BOWL STAND

☆ With the proper material and a few hours' labor a very attractive Colonial type stand can

be turned on your lathe. The bowl is an outboard turning made up of pieces glued together as shown in line drawing below. Rough band saw to size before mounting on the six inch face plate. The three legs are simply a series of beads and coves. Apply the finish to both the bowl and the legs while in the lathe. The stock used was maple, finished in Early American Red Maple. If no stock is available locally to make up the bowl a commercial one can be purchased from your local department store and the legs and stretchers can be finished accordingly.





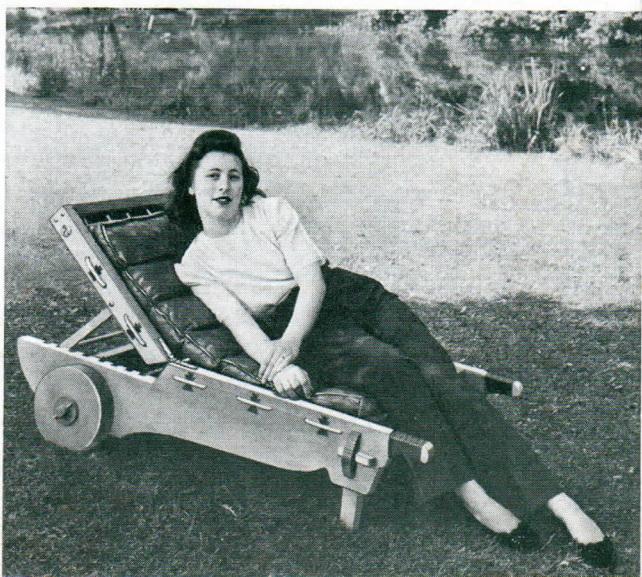


# LAWN LOUNGE

☆ A comfortable lounge is a welcome piece of furniture when you wish to rest on your lawn to pass a few moments of your leisure time. All wood parts should be made of cypress, cedar, or pine except the axle and wheels; these should be made of maple or birch. Be sure to sand all edges smooth, or if you want to put a little more time on this project hand adze the edges to effect a hand-made appearance in conformance with old mission type furniture. For a full length model change the dimension A shown on line drawing (opposite page) to 88¼ inches. Finish natural with boiled linseed oil, followed by two coats of good spar varnish. The piece could be decorated with bright colored enamel in a manner similar to the Indian type decoration shown in the above photographs.

## BILL OF MATERIAL

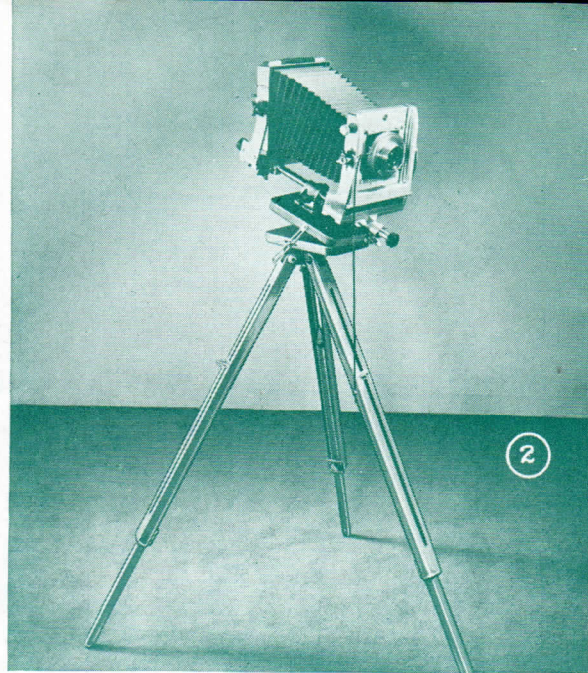
No. Req.	Name	Size
2 —	Side .....	1½ x 9½ x 51½
1 —	Front Cross Piece .....	1½ x 5½ x 30
2 —	Wedge .....	¾ x ¾ x 3¾
2 —	Leg .....	2 x 2½ x 10
1 —	Axle .....	1½ Diam. x 34
1 —	Back Cross Piece .....	1½ x 3½ x 24
4 —	Dowel .....	5/8 Diam. x 3
4 —	Corner Blocks .....	1½ x 3 x 5½
2 —	Wood Collars .....	3 Diam. x ½
4 —	Metal Spacer Washer .....	3 Diam.
2 —	Wheel .....	1¾ x 9 x 9
2 —	Dowel .....	¼ Diam. x 2¼
1 —	Back Rest End .....	1½ x 2½ x 2¼
2 —	Back Rest Sides .....	1½ x 2½ x 22
4 —	Dowel .....	½ Diam. x 3
2 —	Back Rest Support .....	¾ x ¾ x 10¾
1 —	Back Rest Support Dowel .....	5/8 Diam. x 25½
2 —	Carriage Bolt with Nut and Washer .....	5/16 Diam. x 2¾
2 —	Back Flap Hinge with ½ Flt. Hd. Wd. Screw .....	1¼ x 3¼
12 —	No. 10 x 1½ Flt. Hd. Wd. Screw Sash Cord for Corner Blocks .....	¾ x 55 ft.





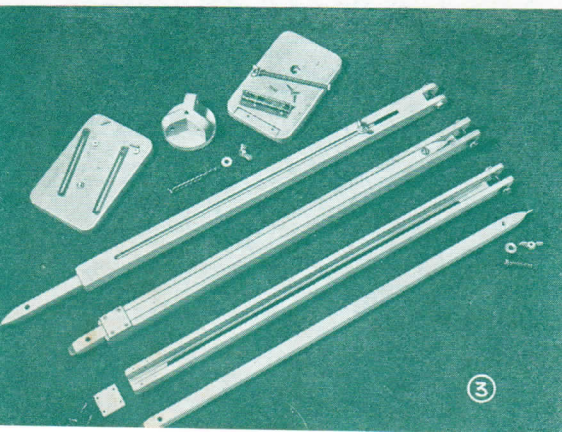






## Easy to Build CAMERA TRIPOD

☆ The home crafter who is also interested in photography as well as wood-working will find this tripod a very handy gadget for use with either a box or view camera. For a stand that will take a lot of abuse we recommend making it of birch or maple. When finished with walnut or mahogany stain and two coats of shellac followed with wax, it will look just like a professional model. All required parts are indicated on the bill of material below. The square portion of the  $3/16 \times 5\frac{1}{2}$  inch carriage bolt should be rounded off for free movement of the lid holder. The metal points on the reversible legs can be made by inserting 2-inch finishing nails 1 inch deep and filing the head to a point.



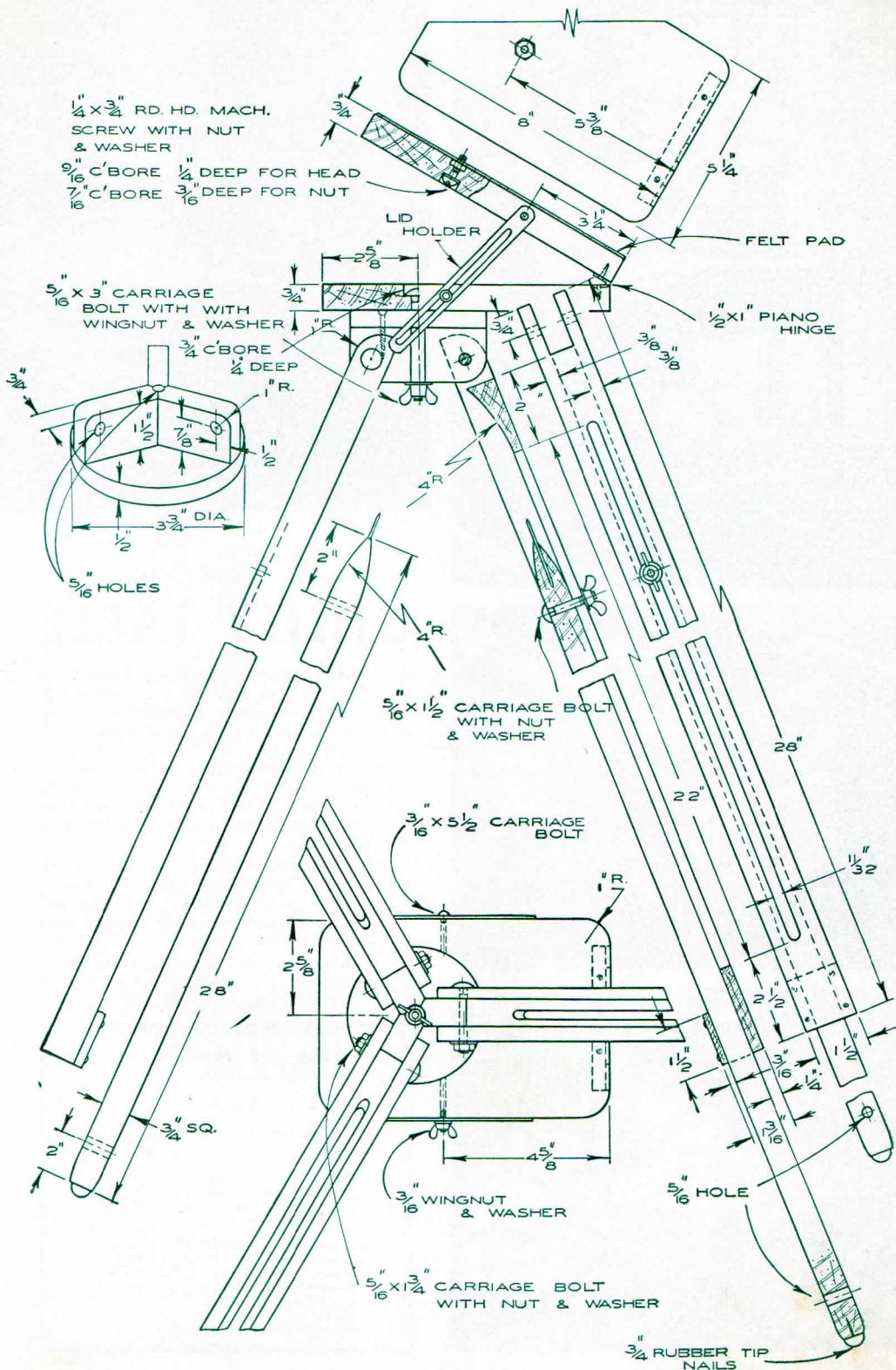
### BILL OF MATERIAL

No. Req.	Name	Size
1—	Tripod Top (stationary)	$3/4 \times 5\frac{1}{4} \times 8$
1—	Tripod Top (swivel)	$3/4 \times 5\frac{1}{4} \times 8$
1—	Swivel Head Top	$1\frac{1}{2} \times 3\frac{3}{4} \times 3\frac{3}{4}$
3—	Swivel Head Leg Support	$3/4 \times 1\frac{7}{8} \times 1\frac{1}{2}$
3—	Top Leg	$1 \times 1\frac{1}{2} \times 28$
3—	Adjustable Leg Holder	$3/16 \times 1\frac{1}{2} \times 1\frac{1}{2}$
3—	Adjustable Leg	$3/4 \times 3/4 \times 28$

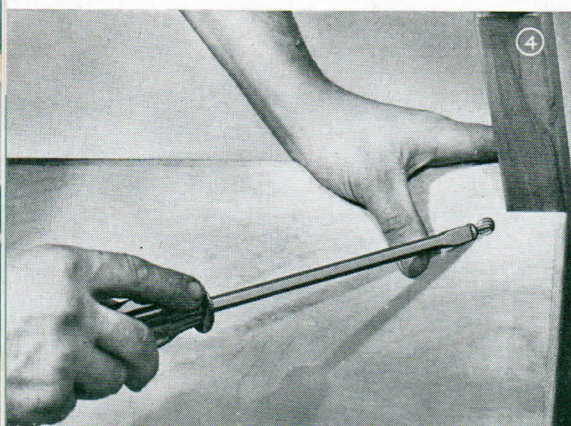
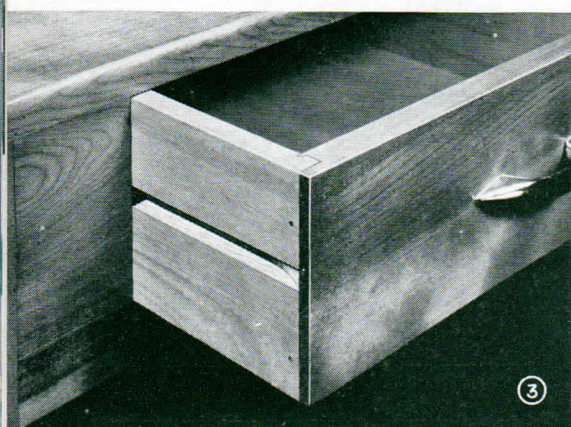
#### HARDWARE

1—	$1/4 \times 3/4$ Rd. Hd. Mach. Screw with Nut & Washer
1—	$1/2 \times 1 \times 4$ Piano Hinge with $5/8$ Flt. Head Wood Screws
2—	$1/2 \times 6$ Lid Holder
1—	$3/16 \times 5\frac{1}{2}$ Carriage Bolt with Wing Nut & Washer
1—	$5/16 \times 3$ Carriage Bolt with Wing Nut & Washer
3—	No. 10 $\times 1\frac{1}{2}$ Wood Screws (for swivel head)
3—	$5/16 \times 1\frac{3}{4}$ Carriage Bolt with Wing Nut & Washer
3—	$1/8 \times 2$ Metal Point
3—	$3/4$ Rubber Tip Nail
3—	$5/16 \times 1\frac{1}{2}$ Carriage Bolt
12—	No. 5 $\times 1\frac{1}{2}$ Wood Screws (for adjustable leg holder)
1—	$5\frac{1}{8} \times 7\frac{7}{8}$ Felt Pad









## *A Handy* UTILITY TABLE

☆ A sturdy as well as convenient size table for use anywhere will not only please the woman of the house but the whole family as well. Mother can use it for placing a bath tub for the baby, or mixmaster, electric toaster, or cooker, serving table, while Dad can use it for his projector; Brother can do his model work on it, and Sister can use it as a typing table or portable desk, plus hundreds of other uses.

Made of birch, it can be left natural by applying two coats of shellac and a coat of semi-gloss varnish for better wear. The two inch casters make it very easy to move from one room to another.

For added strength, screw fasten the shelf to the legs with No. 10 x 1 1/2" flat head wood screws as shown in Photo No. 4.

### BILL OF MATERIAL

No. Req.	Name	Size
4 —	Leg	1 1/2 x 1 1/2 x 29 1/4
2 —	Top and Shelf	3/4 x 17 x 24
4 —	Dowel	3/8 x 1 3/4 Diam.
2 —	Rail (front and back)	3/4 x 6 x 21 3/4
2 —	Rail (side)	3/4 x 6 x 14 3/4
6 —	Screw Block	1 x 1 x 2 1/2
1 —	Drawer Front	3/4 x 4 1/2 x 15
1 —	Drawer Back	3/8 x 37/8 x 14 1/4
2 —	Drawer Side	7/8 x 4 1/2 x 15 3/4
1 —	Drawer Bottom (panel)	1/4 x 14 1/4 x 15 1/2
2 —	Drawer Stop	1/4 x 1 x 4 1/2
2 —	Drawer Runner	1/2 x 1 x 16
	Drawer Runner Support	3/4 x 3 1/2 x 16
4 —	2" D. Casters	
1 —	Drawer Pull	
18 —	No. 10 x 1 1/2 Fl. Hd. Wd. Screws	







# SAW DUST

## SETTING BIT AND CHISEL FOR MORTISING . . .

To prevent the bits and hollow chisel to overheat when doing mortising make absolutely sure that the bit projects far enough beyond the chisel end so there is approximately 1/32 in. clearance between the wing cutters and chisel bevel to allow the bit to revolve freely without wearing or binding. It is also very important that the bit and chisel are sharp at all times for free cutting and clean mortises.

## SPRAYING WITH ENAMEL AND VARNISH . . .

As a general rule a pressure ranging between 65 and 75 lbs. works well for most enamels or shellac; 80 to 90 lbs. for varnish, and from 55 to 65 lbs. for lacquers. An air filter on your sprayer will eliminate dirt, oil and moisture from the air line before reaching the spray gun.

## BURNING AND GLAZING STOCK ON SHAPER . . .

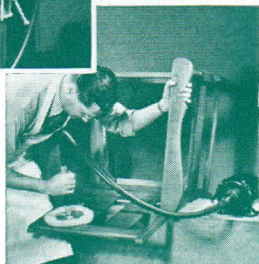
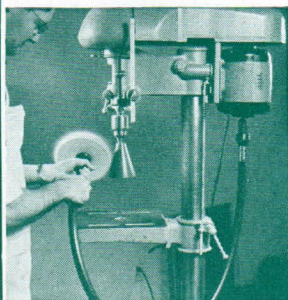
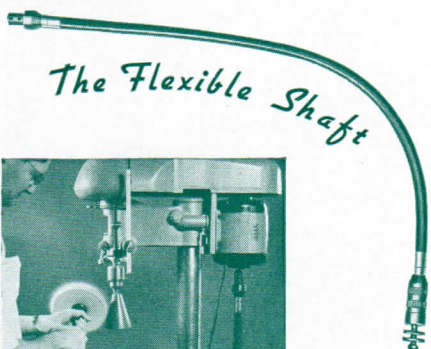
Milled-to-pattern shaper cutters similar to the Delta three-wing cutters are less apt to burn than the straight knives and they retain their true shape until worn out. They cut freely and clear themselves of dust and shavings as the wood is removed. It is always advisable to work with the stock face side down on the shaper table. This method results in much more uniformity because the face side of the material lies flat and slides along on the level surface of the shaper table and any slight variations in stock thickness will affect the contour of the finished moulding.

**BAND SAW BLADE BREAKAGE** is the cause of two things. First, square gullets at the bases of the teeth and second, insufficient pitch at the fronts. When filing a blade make sure the file takes the whole front of each tooth down to the gullet. This will keep the teeth in their original shape as far as possible. Give enough pitch on the fronts of the teeth. Correct pitch and round gullets will prevent fractures giving you longer blade life.

**WATCH OVERHEATING OF MOTORS . . .** In most cases overheating will show up when a motor is being overloaded or if it has sleeve bearings; these are not getting a sufficient supply of lubricating oil. A thorough cleaning of the bearings and armature will remedy this cause. Do not attempt this job if you are not equipped with the proper tools for taking the motor apart.

**PREVENT CHECKING OF LUMBER . . .** In most up-to-date lumber yards where fine cabinet woods are sold, every piece of stock before it is stacked on the yard, is sprayed at both ends with a special end coating to prevent checking. This means several more inches of usable wood in each piece of lumber. In furniture factories where large quantities are used these inches add up to a great many feet of good lumber that otherwise would have to be discarded. The home crafter can also prevent his stock pile from checking by applying ordinary paraffin or canning wax to both ends of the lumber being stored.

## A HANDY ATTACHMENT FOR YOUR SHOP



A real multiple-use tool for every workshop. It can be attached to any 1/4 horsepower motor or the free end of the double shaft motor of your drill press or lathe.

The handpiece is furnished with a precision ball bearing and has a built-in clamp spindle with a 1/2 inch dia. 1/2"-20 NF thread. The wheel flanges are 1 3/4" with 1/2" arbor hole. Grip maximum between wheel flanges is 1 1/4".

Precision ball bearings used in motor connection. For 1/2" and 5/8" motor shafts, with two set screws for attaching. Easy to connect and disconnect.

### CATALOG LISTINGS

- No. 49-544**—Flexible Shaft, 5 ft. long, with 1/2" motor connection bore.  
Code FLEXA .....\$15.00
- No. 49-545**—Flexible Shaft, 5 ft. long, with 5/8" motor connection bore.  
Code FLEXB .....\$15.00
- No. 49-546**—Flexible Shaft, 6 ft. long, with 1/2" motor connection bore.  
Code FLEXC .....\$16.50
- No. 49-547**—Flexible Shaft, 6 ft. long, with 5/8" motor connection bore.  
Code FLEXD .....\$16.50



# MAIN CONTENTS

## THE DELTAGRAM

## VOLUME 18

### ISSUE No. 1

	Page
Salt and Pepper Shaker Set .....	3
Pedestal Table .....	4
Modern Lightweight Chair .....	6
Double-Faced Book Shelf .....	8
Duck Calls .....	10
Chest of Drawers (Modern Style) .....	12
Shoe-Shine Stool .....	14
Ash Tray (Cobbler's Design) .....	16
Scroll Saw Design (Cowboy on Horse) ..	19

### ISSUE No. 2

Serving Tray ("Kalte Aufschnitt" Tray) ..	23
Lamp Table (Period Design) .....	24
Toy Ironing Board .....	26
A Simple Clothes Rack .....	28
Radio Combination (Modern Design) ..	30
Wardrobe Cabinet (For a Man's Room) ..	32
Pier Shelf (Period Style) .....	34
Two Novel Lamps (For a Child's Room) ..	36
Scroll Saw Design (Ship) .....	39

### ISSUE No. 3

Toy Snow Shovel .....	43
Cedar Chest .....	44
Table Lamps (Wood and Plastic) .....	46
Table Center Piece (Old Wooden Oxcart) .....	48
Letter Opener (Turned Brass) .....	49
Extension Coffee Table .....	50
Juvenile Bed .....	52
Desk Dresser Combination (Modern Design) .....	54
Colonial Bookcase .....	56
Scroll Saw Design (Knight On Horse) ..	59

### ISSUE No. 4

	Page
A Simple Napkin Holder .....	63
Combination Hassock and Storage Box ..	64
Child's Play Table .....	66
Two Unusual Bird House Designs (For Wrens) .....	68
Modern Sewing Machine Cabinet .....	70
Plastic Electric Razor Holder .....	72
Wall Shelf and Flower Holder .....	74
Cold-Cut Slicing Boards (Animated) ..	76
Easy-To-Make Garden Chair .....	77
Garden Cut-Outs (Dogs) .....	79

### ISSUE No. 5

Unit Table Set .....	84
Modern Desk .....	86
Circus Bed .....	88
Bowling Pin Lamp .....	90
Chest of Drawers (Juvenile Set) .....	92
Kiddie-Kar .....	94
Circus Cut-Outs .....	96
Circus Cut-Outs .....	97

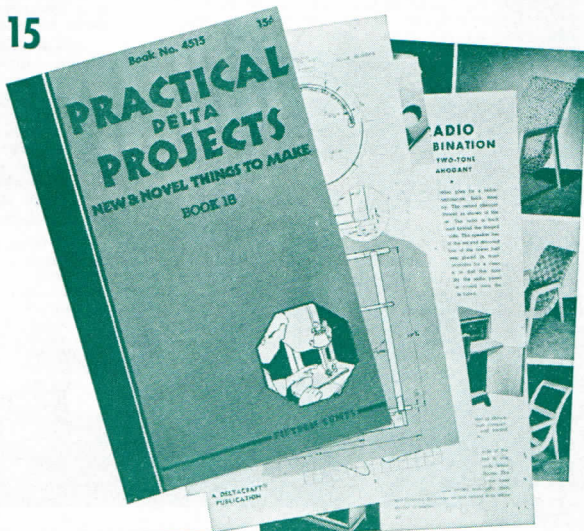
### ISSUE No. 6

Flower Holder Towel Rack .....	103
Knick-Knack Table Lamp .....	104
Toy Lawn Mower .....	106
Duck Water Game .....	107
Individual Croquet Set .....	108
Colonial Knitting Bowl Stand .....	109
Mission Type Lawn Lounge .....	110
Easy-To-Build Camera Tripod .....	112
A Handy Utility Table .....	114

## Practical Projects Book 15

The new Practical Project Book No. 15 is now available. It contains a collection of projects which appeared in the 1947-48 Deltagram. Some of the plans included are: salad bowl set, salad board, kitchen snack bar, occasional table, brass candle sticks, shop mallet, nested coffee tables, colonial wall cabinet, modern dinette set, plant stand, turned wall shelf, modern china cabinet, radio combination, two modern chairs, book table, and others.

**SEND FOR YOUR COPY  
TODAY—ONLY 15c**





# FLYING CHIPS

## Books On Complete Carpentry

**Philadelphia, Pa.**—In about two or three years I have plans to expand my hobby shop and have a regular millwork shop. I intend to get all the larger machines Delta puts out to be able to put out first-class millwork. I have all the operating manuals Delta publishes, but I would like more information on building millwork. Can you tell me of some good book titles which cover detail information on the following subjects?

Straight and fancy stairways (how to measure the number of steps and determine the size of opening required). How to make special kitchen cabinets and all types of cabinets for both homes and stores. How to make screen porches and winter enclosures for same. Also I would like complete detailed information on various types of window frames, windows, door frames, garage doors, etc.

A. B. P.

There are many good books on the above subjects which you can get at your local library or bookstore. Two books which cover most of the items you mention are "Audel's Carpenters & Builders Guides" and "Carpentry & Joinery Work" by Nelson L. Burbank.

## Woodscrew Chart

**Dearborn, Michigan**—When using your chart No. DF-2 "Drill for Woodscrews" which appeared in your Delta Craftsheets Binder, there are several things I do not understand.

In one place there is noted, Lead hole is about 70% of screw size for softwood—90% for hardwood, yet the lead hole drill recommended in chart is roughly 55% of screw size.

Can you help me with this? Don't you think that 90% for hardwood rather large? I don't believe that this would leave enough wood for the screw to hold properly.

P. A. C.

The particular chart in question was developed some years ago and we cannot tell from what source the information was derived.

From our own experience here at the DeltaGram shop we make no attempt to use a chart of that type but rather match the drill to the body of the screw, whether in hardwood or softwood, and then for the lead fill hold we use a drill slightly smaller than the root or core diameter of the screw for softwood and just a trifle larger for hardwood, lubricating the screw with soap when working in hardwood. We have been doing this for many years and the results have been entirely satisfactory, so we do not hesitate to recommend it to our readers.

The Editors.

## Skirtleaf Table

**Clinton, Illinois**—I am very much interested in securing prints of a table and chair, the type used in this country about 100 years ago. I believe the table is referred to as a "skirtleaf table," having a top about 20 inches by 48 inches, and each drop leaf about the same dimensions. The table has four stationary legs and two that swing out, each holding a leaf in the "up" position. I do not know the proper name of the chair, but it is the type commonly used with this design of table and in that period of time. Did you ever publish prints on this project in any of the past issues of the DeltaGram?

R. N. T.

The only table we ever published which comes close to the one mentioned above is the Gateleg Table featured in our book entitled "40 Fine Tables." With both leaves the top measures 12 x 34. With leaves up the top is 34 x 60.

## Wants Pen Pals

**Yorks, England**—I recently wrote to the publishers of Popular Mechanics Magazine, to which I am a subscriber, asking if they could connect me with a few pen friends.

They replied, saying that they do not have lists of pen friends but referred me to you, saying you may be able to help me. I would be very grateful if you would.

I am 22 years old and a joiner by trade. I am interested in all kinds of woodworking with small power tools. Besides being my work, it is also my spare time hobby. I have also many other general interests. Books (especially practical ones), magazines, sports, films, building are a few.

If you could contact five to six people (male and female) or pass on their names and addresses I would be very pleased indeed.

J. W.

Any DeltaGram reader who might be interested in being a pen friend to J. W. please write to us for his full address. We are sure he would like to hear from our home crafters here in the States. This would be an excellent way of exchanging shop ideas.

## Cutting Tenite On the Band Saw

**St. Louis, Missouri**—We have one of your 14" band saws and wish to advise that we fabricate plastic aquarium filters. We are wondering whether you have any special blades for cutting tenite sheets which you could recommend. We notice that the standard blades which are used on the band saw make quite a bit of shavings and it takes a lot of time to cut the edges. Any information you can give us will be greatly appreciated.

O. C. B.

The most practical blade for cutting most plastics is a skip-tooth blade. These come in widths from ¼-inch up to ¾-inch. The width of blade to use depends on the size of curves being cut. Your local sawyer or jobber should be able to get these for you if he does not stock them.

## Burning Basswood Plaques

**Case Lake, Michigan**—I am interested in painting and burning basswood plaques, costume wooden pins and other wooden novelties for resale. Do you have these items for sale?

If you can't supply me with this material could you please send me the addresses of places where I could obtain these novelties.

I would like to start a business of finishing novelties and would appreciate any help you can give me on the following: Where can I obtain these novelties, how to finish them or anything that might help me to get started on this project. Do you know any place that buys hand painted novelties?

I enjoy reading the DeltaGram that one member of my family receives regularly.

Miss D. M.

We are very much interested in any young person striving to establish himself in a business, and especially when that business is in connection with wood. Some of our own publications, plus all the other home craft magazines would be a good source of ideas on novelties. We would suggest that you pay special attention to the advertisements in some of the leading novelty magazines for leads in further contacts which should help you to the establishment of a profitable business. Along this same line of interest we would like to have you look over our Homecraft scroll saw at your local Delta dealer. With this machine you could cut out your own novelties and do the finishing of them and have the complete object for sale made by yourself.



# DESIGNS

These are full size drawings which can be easily traced directly on the material to be cut. Paint the material with a flat coat of paint before drawing the design.





# *Irregular* **SANDING**

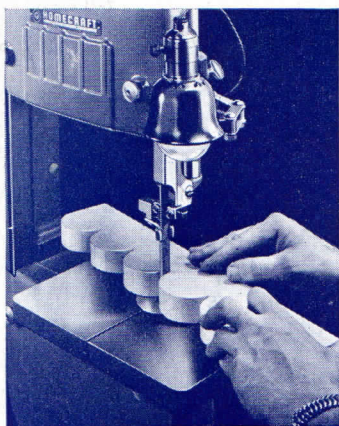
## **NOW A SIMPLE OPERATION**

### *with this NEW*

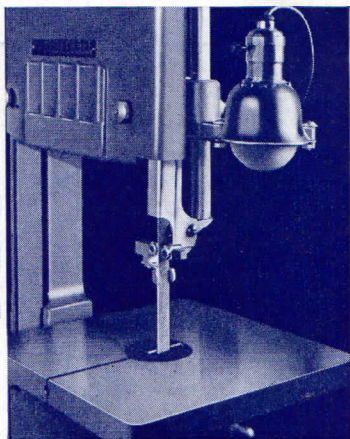
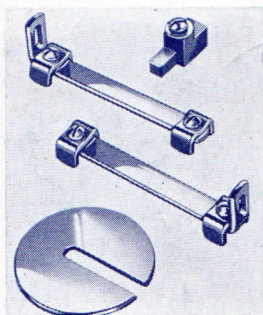
# **SANDING ATTACHMENT**

## *for*

# **YOUR DELTA BAND SAW!**



*Sanding on irregular pieces is no longer a tedious hand operation if you have this handy attachment for your band saw. Takes but a few minutes to make the change-over from a band saw blade to garnet belt.*



*Same attachment fits either the ten or fourteen inch Delta Band Saw. Fine and Medium grit belts are available. Ask your local Delta dealer to show you this handy gadget.*

<b>Cat. No. 28-810</b>	— Sanding Attachment .....	<b>\$3.00</b>
<b>Cat. No. 28-836</b>	— 5½ x 93½ Fine Garnet Bands .....	<b>1.75</b>
<b>Cat. No. 28-837</b>	— 5½ x 93½ Medium Garnet Bands .....	<b>1.75</b>
<b>Cat. No. 28-811</b>	— 5½ x 70 Fine Garnet Bands .....	<b>1.75</b>
<b>Cat. No. 28-812</b>	— 5½ x 70 Medium Garnet Bands .....	<b>1.75</b>

*Prices Subject To Change Without Notice*



**POWER TOOL DIVISION**

Rockwell MANUFACTURING COMPANY

**MILWAUKEE 1, WISCONSIN**